

# Never Compromise on Your Design Again

Providing on-demand airflow insights, Orbital Stack AI helps you design desirable climate-conscious buildings—quickly and cost effectively from day one.

Climate-conscious spaces, with inviting outdoor amenities, maximize property value and performance.

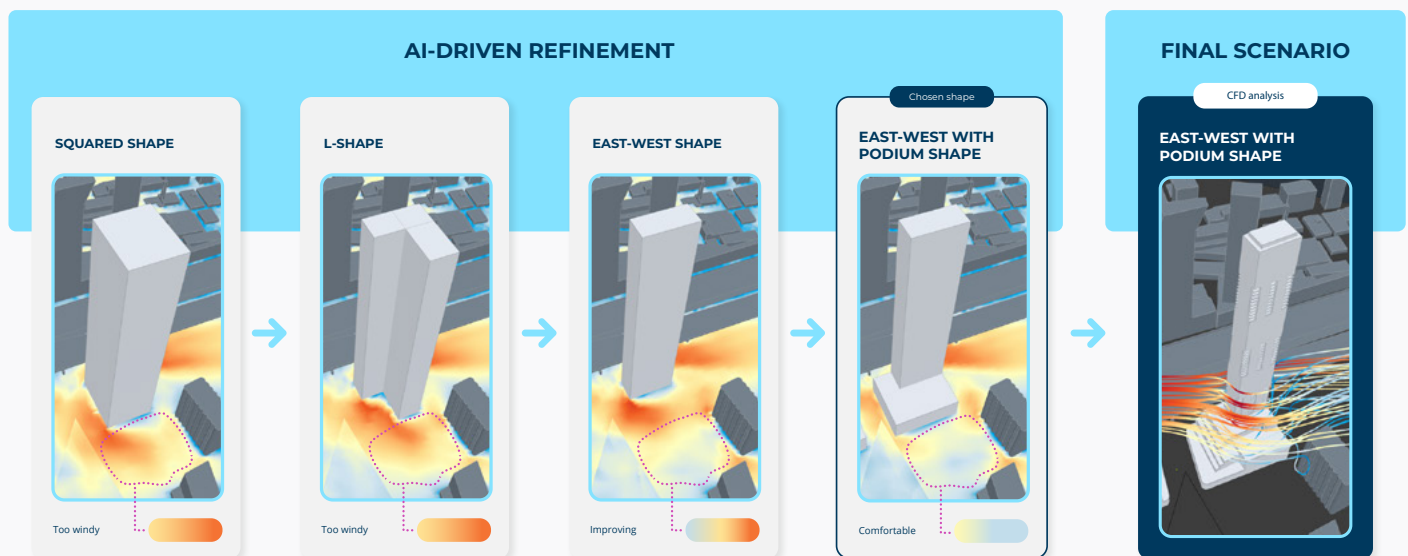
By providing on-demand analysis, Orbital Stack AI lets you leverage wind performance insights from day one to design climate-informed buildings that:

- Stand out in design competitions
- Preserve user comfort and safety in a range of weather conditions
- Extend the seasonal availability of outdoor spaces and amenities
- Attract more foot traffic to ground-level businesses

## Why Orbital Stack AI?

- Win more projects
- Maximize property value
- Reduce risk
- Lower project costs

Reimagine your early design process to avoid unexpected changes later on.



Orbital Stack was created by a multidisciplinary team at RWDI, the global leaders in understanding how the local environment and climate impact large-scale structures (and vice versa). Using RWDI's urban windflow dataset—the largest in the world—we created a first-of-its-kind wind simulation AI that eliminates the capital, expertise, and computational hurdles of legacy approaches.

By providing on-demand airflow analysis, this transformational solution empowers you to:

- Explore and test different massing iterations from your earliest concept
- Validate performance and uncover potential problems early in the design process
- Apply microclimate analysis to every project, no matter the size

AI-powered wind analysis that will blow you away!

# Outdoor comfort and cladding analysis made easy

Designed by users, for users, Orbital Stack equips you with robust outdoor comfort analysis that's:

## ⚡ Fast

- Get started on day one
- On-demand analysis enables iteration
- Results in less than 2 minutes

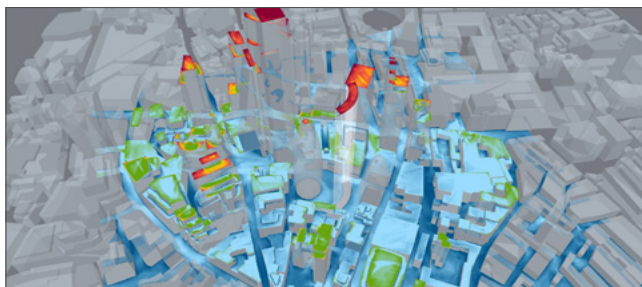
## 💰 Affordable

- Flexible pricing packages
- Simulation for the price of a coffee
- Avoid costly workflow slowdowns

## 💡 Understandable

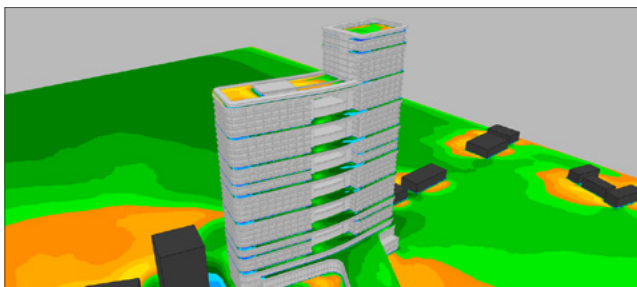
- No specialized skills needed
- Clear legends and display options
- Training and tutorials available

## Wind Comfort Analysis



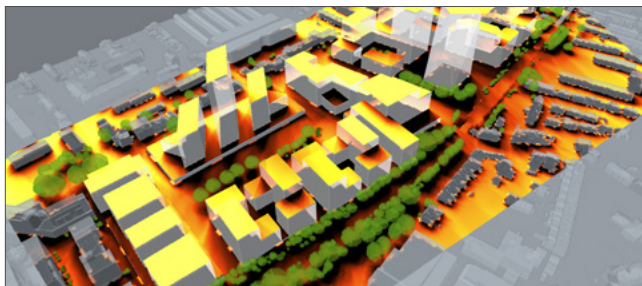
Vivid renderings showcase the comfort of outdoor spaces and their suitability for different activities (e.g., sitting, strolling).

## Thermal Comfort Analysis



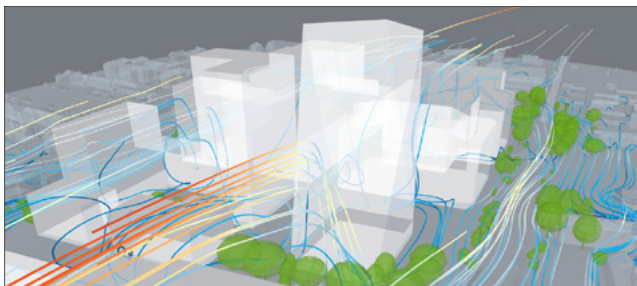
Objective metrics (e.g., SPMV\*, UTCI) reveal which areas are comfortable and which aren't, allowing designers to identify where mitigations may be needed.

## Shadowing Analysis



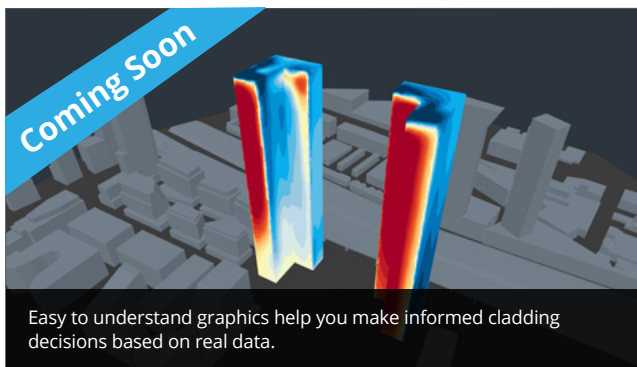
Areas of light and shade become clear as day, helping to guide designs that make effective use of the outdoor environment.

## Airflow Analysis



Streamlines bring wind patterns to life, creating an intuitive understanding of how different flows shape local conditions.

## Cladding Pressure Analysis



Easy to understand graphics help you make informed cladding decisions based on real data.



Allies and Morrison



KrueckSexton Partners



Ready to join other world-class architects and take your designs to the next level?

Connect with us at [sales@orbitalstack.com](mailto:sales@orbitalstack.com) or visit [www.orbitalstack.com](http://www.orbitalstack.com) to learn more.